

CATALOGUE NO. 7215.0

EMBARGO: 11:30 AM (CANBERRA TIME) MON 4 AUG 1997

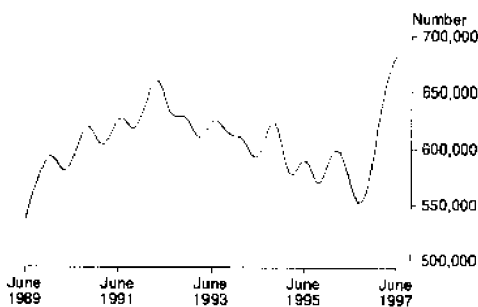
LIVESTOCK PRODUCTS, AUSTRALIA JUNE 1997

MAIN FEATURES

Livestock Slaughterings

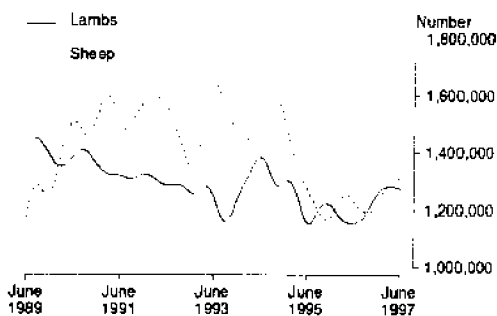
The trend estimate for cattle slaughterings continued to rise in June 1997 and is now 22.9% above the last trough in August 1996. The increasing trend during most of 1996-97 is due in part to expected continuation of dry conditions in the eastern States, and business factors associated with livestock.

CATTLE SLAUGHTERINGS
Trend Series



In June 1997, the trend estimate for sheep slaughterings rose for the eighth consecutive month and is 10.1% above the last trough in October 1996.

SHEEP AND LAMB SLAUGHTERINGS
Trend Series



The trend estimate for pig slaughterings rose for the eighth consecutive month and is 3.5% above the last trough in October 1996.

Red Meat

The trend estimate for total red meat production rose for the tenth consecutive month and is 16.4% above the last trough in August 1996. The trend estimate for beef production is 21.5% above the last trough in August 1996. Although mutton production fell marginally for the first time in nine months, it is 7.6% above the last trough in September 1996. The trend estimate for lamb production in June 1997 fell marginally for the second consecutive month. The trend estimate for pig meat production rose marginally in June 1997.

Chicken Meat

In June 1997, the trend estimate for chicken meat production rose by 0.7% and it is 1.8% above the last trough in February 1997.

Whole Milk Intake

The trend estimate for whole milk intake by factories rose 0.9% in May 1997. It is 2.8% above the last trough in December 1996.

Wool Receivals by Brokers and Dealers

The trend estimate for wool receivals by brokers and dealers rose 4.7% in June 1997 and is 34.4% above the last trough in August 1996.

Live Exports

In May 1997 live sheep exports rose 7.3% to 360,800. The unit value (\$34.69) fell 2.0% and the gross value (\$12.5 million) rose 5.2%.

Live cattle exports rose 7.5% to 94,800 in May 1997. The unit value (\$516.19) rose 3.7% and the gross value (\$48.9 million) rose 11.5%.

INQUIRIES

- for further information about statistics in this publication and the availability of related unpublished statistics — contact Selena Biggs on Canberra (06) 252 5226 or any ABS State office.
- for information about other ABS statistics and services — please contact Information Services on (06) 252 6627, 252 6007 or any ABS State Office.

TABLE 1. NUMBERS OF LIVESTOCK SLAUGHTERED
(*000)

	NSW	Vic.	Qld	SA	WA	Tas.	Aust.	Seas- onally adjusted	Trend estimate(b)
BULLS, BULLOCKS AND STEERS (a)									
1994-95	1,105.6	782.7	1,597.1	206.1	244.0	111.2	4,056.6
1995-96	1,024.0	946.9	1,505.8	180.4	218.0	95.4	3,988.2
1996-97 p	1,077.7	900.3	1,507.3	170.0	198.0	110.1	3,986.6
<i>1995-96 --</i>									
April	85.4	77.8	129.8	11.4	15.3	6.3	326.3	348.7	352.5
May	102.4	91.4	143.5	12.6	16.0	10.4	377.3	347.9	346.6
June	90.3	72.5	123.8	10.6	15.2	8.7	322.8	346.4	335.9
<i>1996-97 p--</i>									
July	89.6	83.2	130.9	9.7	13.1	7.3	335.0	331.3	322.6
August	83.9	67.6	126.8	9.1	14.3	6.2	310.2	294.5	310.4
September	86.2	61.0	125.2	12.3	16.6	6.4	309.6	297.0	304.8
October	94.5	79.0	127.3	15.8	20.1	7.6	345.8	304.3	307.4
November	96.9	72.1	136.0	17.5	20.3	9.4	354.7	313.4	318.0
December	81.1	80.7	78.3	14.0	21.2	12.3	288.7	328.0	333.3
January	86.0	89.4	75.4	16.3	20.3	12.8	301.8	357.3	347.8
February	88.2	85.3	137.3	14.5	16.7	10.6	354.0	382.8	356.8
March	93.7	66.2	136.8	14.7	14.2	10.1	336.8	340.0	360.1
April	99.3	81.9	142.5	17.3	14.2	10.3	367.3	382.2	359.9
May	95.9	71.1	150.4	15.2	14.1	9.7	360.4	336.9	357.9
June	82.4	62.8	140.5	13.7	12.9	7.5	322.2	350.8	354.3
COWS AND HEIFERS (a)									
1994-95	943.4	684.6	960.7	218.1	186.4	96.7	3,163.4
1995-96	939.1	576.7	901.2	194.1	181.9	88.9	2,961.5
1996-97 p	959.7	778.5	993.7	198.8	208.1	98.3	3,301.4
<i>1995-96 --</i>									
April	70.7	38.1	78.1	14.1	12.4	6.7	223.9	230.7	237.7
May	93.6	43.8	83.7	17.6	13.0	10.8	270.8	223.4	232.9
June	72.6	37.0	88.4	13.2	11.2	9.2	242.4	232.8	232.6
<i>1996-97 p--</i>									
July	71.8	38.3	92.2	13.2	11.8	5.8	244.6	235.6	236.0
August	65.7	54.1	81.8	13.8	14.5	4.6	244.9	246.5	241.8
September	70.6	57.0	71.7	14.0	16.6	5.2	241.7	246.1	248.3
October	83.6	67.8	70.6	18.0	19.9	6.4	271.5	262.4	253.2
November	73.7	59.8	68.0	19.3	19.7	8.0	252.0	256.4	257.4
December	64.0	57.8	42.4	14.9	19.7	8.9	209.1	253.0	263.0
January	76.6	69.9	50.4	16.5	20.7	8.1	244.0	280.5	271.3
February	82.0	63.5	84.4	17.1	20.9	8.8	278.3	273.7	282.2
March	80.2	65.0	89.1	14.5	17.9	8.1	276.1	275.9	294.2
April	93.6	83.7	107.7	19.9	15.3	11.0	334.7	337.4	306.0
May	102.5	84.0	124.0	18.9	16.5	12.7	368.1	313.2	316.3
June	95.5	77.7	111.5	18.7	14.7	10.7	336.3	320.2	324.6

TABLE 1. NUMBERS OF LIVESTOCK SLAUGHTERED

('000)—continued

	NSW	Vic.	Qld	SA	WA	Tas.	Aust.	Seas- onally adjusted	Trend estimate(b)
TOTAL CATTLE (excludes calves) (a)									
1994-95	2,049.0	1,467.3	2,557.8	424.3	430.5	207.9	7,220.0
1995-96	1,963.1	1,523.6	2,406.9	374.5	399.9	184.2	6,949.7
1996-97 p	2,037.5	1,678.8	2,501.0	368.8	406.0	208.3	7,288.0
<i>1995-96 —</i>									
April	156.0	115.9	207.9	25.5	27.7	13.0	550.2	579.4	590.2
May	196.1	135.3	227.2	30.2	29.0	21.2	648.1	571.3	579.5
June	162.9	109.5	212.2	23.7	26.4	18.0	565.2	579.2	568.5
<i>1996-97 p—</i>									
July	161.4	121.6	223.1	22.8	24.9	13.2	579.6	566.9	558.6
August	149.6	121.7	208.6	22.8	28.8	10.8	555.1	541.0	552.2
September	156.8	118.0	196.8	26.3	33.2	11.6	551.4	543.1	553.1
October	178.1	146.7	197.9	33.8	40.0	14.0	617.3	566.7	560.6
November	170.6	131.9	204.0	36.8	40.0	17.4	606.7	569.8	575.4
December	145.0	138.4	120.7	28.9	40.9	21.2	497.9	581.0	596.4
January	162.6	159.3	125.8	32.9	41.0	21.0	545.8	637.8	619.2
February	170.2	148.8	221.7	31.6	37.5	19.4	632.3	656.5	639.0
March	173.9	131.2	225.9	29.3	32.1	18.2	613.0	615.9	654.3
April	192.9	165.6	250.2	37.2	29.5	21.3	702.0	719.6	665.9
May	198.4	155.2	274.4	34.1	30.6	22.4	728.5	650.1	674.2
June	177.8	140.4	252.0	32.4	27.6	18.2	658.5	671.0	678.9
CALVES									
1994-95	248.3	635.6	117.1	12.0	3.8	28.8	1,047.7
1995-96	244.2	589.8	91.2	12.6	3.2	41.4	984.6
1996-97 p	256.9	697.9	108.8	15.8	5.4	43.7	1,129.9
<i>1995-96 -</i>									
April	18.9	27.6	7.1	1.7	0.2	0.9	56.6	83.0	81.1
May	24.5	47.2	8.0	1.4	0.3	1.4	83.1	81.3	82.7
June	19.9	75.8	6.8	1.0	0.3	0.7	104.7	84.5	85.3
<i>1996-97 p—</i>									
July	22.0	82.3	7.4	1.4	0.3	1.8	115.4	82.9	87.9
August	23.7	182.1	10.4	1.4	0.4	13.4	231.7	95.8	90.0
September	18.2	131.0	6.8	1.4	0.6	16.8	174.8	97.0	91.4
October	18.2	70.4	10.2	1.1	0.5	6.1	106.5	92.2	91.7
November	18.1	19.2	9.0	0.8	0.5	0.6	48.3	83.1	92.1
December	15.4	8.7	7.9	0.6	0.5	0.2	33.4	93.6	93.3
January	24.7	7.9	10.5	0.7	0.4	0.1	44.4	99.1	95.6
February	22.5	6.6	7.4	0.9	0.4	0.1	37.9	94.8	98.3
March	20.7	15.9	9.0	1.2	0.4	0.4	47.7	95.5	100.3
April	27.2	42.4	11.1	2.3	0.3	1.6	85.2	118.7	100.9
May	23.9	55.9	10.2	2.0	0.6	1.7	94.5	96.1	100.5
June	22.3	75.5	9.0	1.9	0.6	1.0	110.2	89.7	98.9

TABLE 1. NUMBERS OF LIVESTOCK SLAUGHTERED
(^{'000})—continued

	NSW	Vic.	Qld	SA	WA	Tas.	Aust.	Seas- onally adjusted	Trend estimate(b)
SHEEP									
1994-95	6,577.8	3,229.6	770.9	3,114.4	3,088.1	569.3	17,499.8
1995-96	5,680.4	2,488.0	727.5	2,370.5	2,833.3	349.7	14,581.1
1996-97 p	5,239.8	2,799.5	956.2	2,583.2	2,784.9	397.9	14,855.3
1995-96 —									
April	517.7	196.2	65.6	164.4	233.8	28.4	1,217.1	1,246.5	1,253.3
May	497.3	158.5	81.6	154.5	282.6	37.0	1,225.1	1,215.8	1,246.9
June	396.4	128.8	64.4	138.1	213.3	27.7	978.4	1,268.3	1,231.4
1996-97 p—									
July	405.7	123.7	87.8	116.7	171.8	21.6	937.0	1,159.6	1,213.2
August	366.4	182.2	72.3	122.7	229.6	13.2	992.5	1,231.4	1,199.5
September	378.5	182.9	76.5	159.1	275.3	14.0	1,092.1	1,197.6	1,193.3
October	466.4	251.8	84.6	232.3	314.4	19.8	1,379.6	1,196.4	1,191.8
November	450.8	251.0	91.1	316.1	269.6	32.3	1,419.6	1,189.3	1,199.1
December	392.5	274.8	75.9	191.1	235.2	42.0	1,221.0	1,144.8	1,217.2
January	467.8	324.5	92.5	256.8	219.0	47.5	1,417.2	1,307.2	1,242.3
February	478.3	304.8	86.6	276.6	223.2	47.4	1,426.4	1,298.8	1,267.6
March	465.2	234.3	66.3	257.7	239.1	43.5	1,313.7	1,195.7	1,288.3
April	513.9	261.3	79.0	260.2	226.7	47.6	1,397.9	1,416.9	1,301.5
May	462.1	225.4	73.8	211.3	250.1	37.0	1,267.4	1,275.9	1,308.9
June	392.4	183.0	69.9	182.6	130.8	32.1	990.8	1,277.7	1,311.9
LAMBS									
1994-95	4,133.7	6,303.2	608.7	1,914.8	1,463.7	477.2	15,289.4
1995-96	3,417.3	5,897.7	695.3	1,905.2	1,594.0	393.3	14,223.1
1996-97 p	3,583.3	5,977.1	774.3	1,765.1	2,093.7	374.4	14,816.6
1995-96 —									
April	313.2	455.8	59.9	144.2	135.5	29.6	1,162.9	1,168.9	1,159.0
May	291.6	505.0	49.7	161.9	165.7	37.9	1,240.0	1,147.9	1,153.6
June	262.3	400.8	48.3	98.2	145.9	31.8	1,009.4	1,149.6	1,152.4
1996-97 p—									
July	313.8	425.2	63.3	100.1	163.2	25.3	1,113.0	1,162.7	1,154.7
August	329.2	439.4	74.8	103.1	172.6	21.2	1,162.0	1,155.8	1,162.8
September	350.4	468.0	55.2	146.3	179.0	25.4	1,241.7	1,189.6	1,180.6
October	368.1	552.5	74.4	176.2	242.0	25.2	1,463.0	1,189.0	1,204.3
November	270.0	547.6	59.8	149.9	157.1	27.1	1,236.1	1,203.3	1,230.1
December	262.8	528.3	55.4	125.7	129.2	28.2	1,153.4	1,259.2	1,253.8
January	287.7	533.6	72.1	156.3	125.5	42.8	1,241.3	1,337.5	1,271.4
February	275.1	460.0	63.3	155.8	180.5	35.6	1,192.6	1,299.1	1,280.7
March	280.6	466.0	60.4	142.6	176.4	35.0	1,179.9	1,179.5	1,283.4
April	316.7	559.2	68.8	172.7	198.5	35.2	1,376.1	1,348.5	1,282.8
May	281.7	518.7	68.4	171.8	228.6	42.7	1,336.8	1,284.2	1,281.1
June	247.3	478.6	58.4	164.4	141.0	30.7	1,120.5	1,259.5	1,276.3

TABLE 1. NUMBERS OF LIVESTOCK SLAUGHTERED
(^{'000}) *continued*

	NSW	Vic.	Qld	SA	WA	Tas.	Aust.	Seas- onally adjusted	Trend estimate(b)
	PIGS								
1994-95	1,505.4	1,196.9	1,154.4	469.6	604.1	92.9	5,119.6
1995-96	1,408.0	1,142.1	1,080.0	466.8	562.8	86.5	4,823.4
1996-97 p	1,328.5	1,195.6	988.5	428.5	550.8	79.2	4,633.6
<i>1995-96 —</i>									
April	106.6	94.5	81.4	435.4	45.9	6.4	4375.7	392.9	394.6
May	124.4	107.2	90.0	444.3	50.5	7.7	4431.1	391.0	392.4
June	117.3	87.0	91.5	433.7	44.2	7.0	4386.5	384.0	389.7
<i>1996-97 p---</i>									
July	117.6	103.0	88.1	43.4	48.5	7.2	413.9	404.6	386.2
August	112.8	91.7	81.2	40.9	43.7	6.3	382.8	379.4	382.3
September	121.4	91.3	73.1	32.9	42.5	6.3	372.4	376.8	380.0
October	109.6	102.8	79.5	32.0	39.2	5.9	375.2	365.1	379.2
November	109.6	94.3	77.7	38.3	44.9	5.7	376.5	383.4	380.5
December	130.6	103.0	78.6	30.4	46.9	7.0	403.1	388.9	383.4
January	96.6	92.9	81.5	30.9	42.6	6.8	356.6	392.7	387.0
February	94.2	96.8	82.3	36.9	45.7	6.2	366.9	394.3	389.8
March	108.2	90.2	80.6	31.6	50.0	6.6	371.9	369.1	391.0
April	108.0	111.1	92.5	35.7	44.8	6.8	404.7	412.9	391.7
May	108.0	113.4	89.4	39.6	49.3	7.9	413.0	384.6	392.1
June	111.9	105.2	84.0	35.8	52.7	6.3	396.5	392.9	392.4

(a) Domesticated buffaloes slaughtered in the Northern Territory are included in Australian totals. (b) Trend estimates for the most recent months are subject to revision when data for subsequent months become available.

TABLE 2. RED MEAT PRODUCED (a)
(Tonnes carcass weight)

	NSW	Vic.	Qld	SA	WA	Tas.	Aust.	Seasonally adjusted	Trend estimate(b)
BEEF (c)									
1994-95	471,183	335,059	697,750	99,108	97,140	49,907	1,765,607
1995-96	458,209	348,649	655,664	89,704	94,859	45,377	1,710,922
1996-97 p	470,863	373,771	683,099	85,347	93,649	52,485	1,775,647
<i>1995-96—</i>									
April	36,393	26,908	56,338	6,250	6,853	3,066	136,597	143,621	146,162
May	46,244	31,242	60,841	6,935	6,906	5,246	159,125	140,373	142,688
June	37,404	25,209	56,186	5,780	6,354	4,461	137,864	140,255	139,226
<i>1996-97 p—</i>									
July	37,188	27,672	59,902	5,241	5,731	3,271	141,431	138,680	136,416
August	34,532	27,220	56,446	5,190	6,731	2,638	135,189	130,562	134,786
September	35,879	26,388	52,985	6,650	7,907	2,878	134,309	133,760	135,092
October	42,306	33,023	54,345	8,130	9,456	3,434	152,000	139,818	137,064
November	40,612	29,508	57,380	8,930	9,416	4,262	151,178	140,721	140,705
December	34,460	31,543	33,378	6,681	9,130	5,559	121,286	139,910	145,845
January	37,809	35,911	35,151	7,333	9,291	5,434	131,502	152,744	151,377
February	39,880	33,270	61,801	7,223	8,512	4,976	156,180	163,748	156,076
March	41,293	28,955	61,834	6,845	7,389	4,635	151,363	151,944	159,552
April	43,290	36,387	68,351	8,355	6,662	5,394	169,442	173,098	161,882
May	44,406	33,595	73,879	7,606	7,024	5,524	174,620	159,062	163,241
June	39,208	30,298	67,648	7,165	6,399	4,479	157,145	158,954	163,770
VEAL									
1994-95	16,677	14,428	4,918	433	250	977	37,810
1995-96	16,273	12,009	3,854	396	213	875	33,774
1996-97 p	16,515	14,359	5,195	530	308	920	37,922
<i>1995-96—</i>									
April	1,258	583	283	49	13	22	2,219	2,656	2,671
May	1,617	961	331	45	16	34	3,023	2,658	2,695
June	1,259	1,496	274	33	21	18	3,114	2,579	2,769
<i>1996-97 p—</i>									
July	1,397	1,720	293	41	23	39	3,527	2,709	2,870
August	1,509	3,589	499	44	23	272	5,942	3,437	2,983
September	1,157	2,643	286	38	29	339	4,498	3,183	3,096
October	1,090	1,469	484	35	24	125	3,232	2,912	3,180
November	1,169	494	437	27	25	15	2,172	3,113	3,241
December	1,012	226	384	22	26	7	1,684	3,435	3,295
January	1,631	218	518	26	23	5	2,425	3,421	3,335
February	1,517	174	395	40	21	6	2,157	3,380	3,357
March	1,325	363	438	36	21	13	2,201	3,066	3,336
April	1,731	895	529	69	17	38	3,295	3,723	3,275
May	1,550	1,106	499	71	37	40	3,319	3,085	3,197
June	1,427	1,461	433	81	40	22	3,469	2,885	3,106

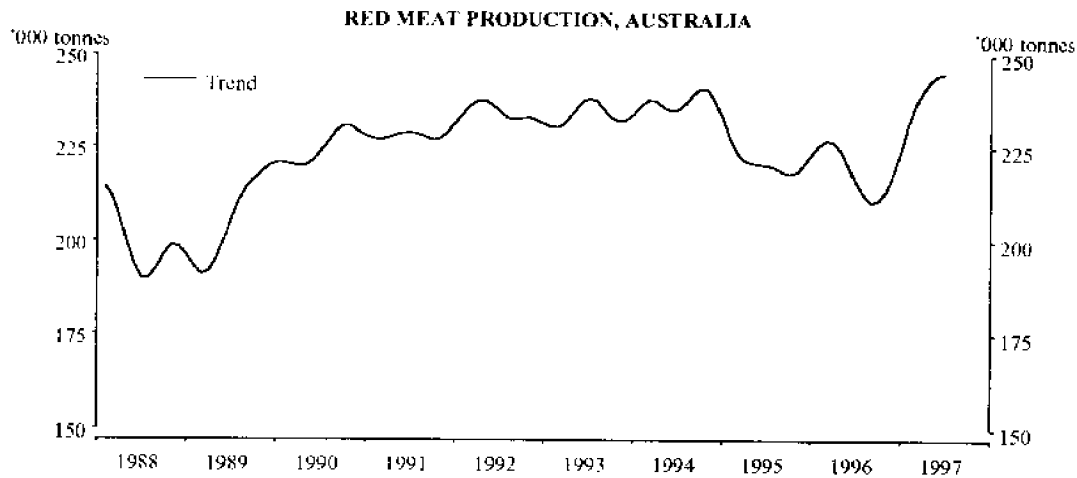
TABLE 2. RED MEAT PRODUCED (a)
(Tonnes carcass weight)—continued

	NSW	Vic.	Qld	SA	WA	Tas.	Aust.	Seasonally adjusted	Trend estimate(b)
MUTTON									
1994-95	131,052	64,440	15,308	66,759	61,868	11,230	353,590
1995-96	121,376	50,910	14,161	55,600	57,428	7,414	309,577
1996-97 p	109,424	55,417	19,326	58,023	55,337	8,464	307,947
1995-96 -									
April	10,982	3,952	1,239	3,768	4,799	593	25,562	26,629	26,508
May	10,434	3,159	1,535	3,532	5,699	779	25,421	25,624	26,208
June	8,297	2,575	1,206	3,065	4,239	578	20,163	26,530	25,741
1996-97 p									
July	8,366	2,432	1,700	2,670	3,412	448	19,232	24,130	25,282
August	7,599	3,693	1,454	2,749	4,532	270	20,428	25,306	24,983
September	8,230	3,730	1,583	3,733	5,383	286	23,068	25,067	24,878
October	10,011	5,217	1,770	5,528	6,272	409	29,424	25,064	24,905
November	9,754	5,066	1,837	7,351	5,466	700	30,356	24,874	25,105
December	8,401	5,610	1,575	4,500	4,693	928	25,908	24,355	25,468
January	10,059	6,485	1,902	5,815	4,245	1,020	29,283	27,029	25,902
February	9,952	5,915	1,778	6,057	4,280	1,019	29,183	26,801	26,292
March	9,641	4,469	1,375	5,396	4,982	927	26,938	24,843	26,586
April	10,343	4,990	1,582	5,632	4,681	1,014	28,410	29,105	26,739
May	9,263	4,301	1,411	4,637	4,835	774	25,365	25,949	26,791
June	7,805	3,509	1,360	3,955	2,556	669	19,853	26,151	26,765
LAMB									
1994-95	71,738	111,202	10,621	36,147	22,359	8,412	267,968
1995-96	62,648	110,172	12,584	37,735	28,139	7,407	264,721
1996-97 p	66,517	111,362	14,173	35,081	35,881	7,043	274,646
1995-96 —									
April	5,787	8,449	1,071	2,957	2,394	557	21,685	21,807	21,507
May	5,437	9,685	882	3,274	2,879	715	23,407	21,544	21,334
June	4,857	7,543	858	1,909	2,585	600	18,771	20,815	21,239
1996-97 p --									
July	5,770	7,664	1,136	1,896	2,778	474	20,137	21,154	21,240
August	6,046	7,990	1,362	1,856	2,951	398	21,014	21,373	21,406
September	6,480	8,468	1,000	2,776	3,054	478	22,585	22,191	21,801
October	6,882	10,158	1,345	3,422	3,985	474	26,734	21,803	22,304
November	5,041	10,074	1,093	2,983	2,644	510	22,813	22,384	22,813
December	4,936	9,866	999	2,574	2,226	528	21,582	23,760	23,263
January	5,377	10,024	1,347	3,247	2,181	806	23,405	24,466	23,585
February	5,082	8,720	1,168	3,154	3,110	670	22,263	23,931	23,772
March	5,183	8,804	1,124	2,899	2,990	658	21,961	21,912	23,846
April	5,855	10,656	1,278	3,501	3,381	663	25,810	25,332	23,853
May	5,383	9,841	1,251	3,469	3,974	804	25,205	24,065	23,825
June	4,483	9,095	1,070	3,304	2,606	578	21,135	23,135	23,728

TABLE 2. RED MEAT PRODUCED (a)
(Tonnes carcass weight)—continued

	NSW	Vic.	Qld	SA	WA	Tas.	Aust.	Seas- onally adjusted	Trend estimate(b)
PIGMEAT									
1994-95	102,175	84,728	83,143	32,063	37,109	5,982	351,299
1995-96	95,788	83,052	77,696	r31,695	35,341	5,634	r333,967
1996-97 p	88,151	85,756	72,830	29,851	38,897	5,171	324,468
1995-96 —									
April	7,607	6,624	5,852	r2,440	2,899	423	r26,178	27,040	27,309
May	8,576	8,048	6,538	r3,092	3,225	502	r30,403	27,429	27,158
June	8,193	6,325	6,742	r2,381	2,754	456	r27,199	26,711	26,949
1996-97 p—									
July	8,203	7,446	6,552	3,043	2,892	469	28,961	27,699	26,705
August	7,791	6,594	6,066	2,864	2,913	411	27,031	26,482	26,445
September	7,454	6,624	5,414	2,308	2,991	410	25,499	25,409	26,344
October	7,491	7,416	5,868	2,232	2,919	386	26,705	26,068	26,406
November	7,223	6,671	5,742	2,629	3,165	368	26,177	26,485	26,612
December	8,239	7,365	5,591	2,000	3,261	456	27,324	27,473	26,895
January	6,232	6,607	5,886	2,136	3,095	456	24,649	27,632	27,175
February	6,260	6,835	5,974	2,570	3,310	413	25,579	28,140	27,380
March	6,782	6,312	5,848	2,202	3,575	431	25,364	25,261	27,497
April	7,242	7,972	6,829	2,508	3,149	445	28,602	28,788	27,620
May	7,458	8,236	6,747	2,828	3,734	516	29,950	27,792	27,763
June	7,776	7,677	6,312	2,530	3,893	409	28,627	28,019	27,870
TOTAL RED MEAT (c)									
1994-95	792,826	609,857	811,740	234,511	218,725	76,509	2,776,274
1995-96	754,293	604,792	763,960	r215,131	215,979	66,707	r2,652,960
1996-97 p	751,470	640,664	794,623	208,833	224,072	74,083	2,720,630
1995-96 —									
April	62,025	46,515	64,782	r15,465	16,957	4,661	r212,240	221,753	224,157
May	72,308	53,095	70,126	r16,877	18,725	7,276	r241,378	217,628	220,083
June	60,011	43,147	65,266	r13,168	15,952	6,113	r207,111	216,890	215,924
1996-97 p—									
July	60,924	46,933	69,583	12,890	14,837	4,702	213,288	214,371	212,514
August	57,477	49,086	65,827	12,703	17,151	3,990	209,605	207,161	210,602
September	59,201	47,853	61,268	15,505	19,365	4,392	209,959	209,611	211,211
October	67,781	57,283	63,811	19,346	22,656	4,827	238,095	215,665	213,859
November	63,798	51,813	66,489	21,921	20,716	5,855	232,696	217,578	218,476
December	57,047	54,610	41,927	15,777	19,336	7,479	197,784	218,934	224,765
January	61,109	59,245	44,804	18,557	18,834	7,721	211,765	235,293	231,375
February	62,690	54,915	71,115	19,045	19,233	7,083	235,362	245,999	236,877
March	64,224	48,904	70,620	17,378	18,957	6,664	227,828	227,027	240,817
April	68,461	60,901	78,569	20,065	17,890	7,553	255,559	260,046	243,369
May	68,061	57,080	83,787	18,611	19,604	7,659	258,459	239,954	244,818
June	60,698	52,039	76,823	17,035	15,494	6,157	230,230	239,143	245,239

(a) Red meat is shown in carcass weight and excludes offal. (b) Trend estimates for the most recent months are subject to revision when data for subsequent months become available. (c) Buffalo meat produced in the Northern Territory is included in Australian totals.



**RELIABILITY OF JUNE TREND ESTIMATES
FOR PRODUCTION OF RED MEAT**

Readers should exercise care in the interpretation of trend data as the last six observations, in particular, are likely to be revised with either revisions to the underlying data or the addition of data for the month of July.

The table below shows, for red meat production for the six months ended June:

- trend estimates as published;
- trend estimates assuming an increase in seasonally adjusted data for July of 3% on the June figure;
- trend estimates assuming a decrease in seasonally adjusted data for July of 3% on the June figure.

The percentage change of 3% was chosen because the average absolute monthly percentage change in the seasonally adjusted data since the inception of the series has been 3.33%

	<i>Trend as published</i>	<i>What if next month's seasonally adjusted estimate:</i>	
		<i>rises by 3%</i>	<i>falls by 3%</i>
(tonnes, carcass weight)			
<i>1996-97p</i>			
January	231,375	231,443	231,748
February	236,877	237,041	237,577
March	240,817	240,889	241,157
April	243,369	243,228	242,520
May	244,818	244,517	242,179
June	245,239	245,252	240,847
<i>1997-98p</i>			
July	—	244,978	238,331

TABLE 3. STOCKS OF FROZEN MEAT(a), AUSTRALIA
(Source: Australian Meat and Livestock Corporation)
(tonnes)

<i>At last Saturday of</i>	<i>Beef(b) and veal</i>	<i>Mutton</i>	<i>Lamb</i>	<i>Pork</i>	<i>Goat</i>	<i>Offal</i>	<i>Total</i>
<i>1995-96 ---</i>							
March	27,205	7,751	2,181	2,078	26	6,972	46,213
April	30,098	7,484	2,292	2,107	48	7,318	49,347
May	30,356	7,545	2,737	2,191	78	7,015	49,922
June	25,487	7,595	3,072	1,380	39	6,388	43,961
<i>1996-97 p--</i>							
July	22,492	7,081	2,785	1,054	18	6,022	39,452
August	22,304	7,502	3,175	1,593	15	5,866	40,455
September	27,546	8,155	3,087	1,407	36	6,534	46,765
October	28,105	8,617	3,341	1,474	51	6,852	48,440
November	22,881	8,926	3,166	1,312	49	6,320	42,654
December	19,697	6,712	2,948	967	28	5,418	35,770
January	19,236	3,709	2,372	955	23	5,122	31,417
February	22,364	3,518	2,651	1,211	18	5,526	35,288
March	22,353	3,952	3,327	1,646	14	5,777	37,069
April	23,584	4,594	3,537	1,962	24	5,608	39,309
May	24,182	4,062	3,896	1,563	43	5,867	39,613

(a) Held in cold stores registered to handle meat for export, and includes meat passed for export, canning and other purposes. Includes boneless and carcass meat.

(b) Includes buffalo meat.

TABLE 4. EXPORTS OF FRESH, FROZEN AND PROCESSED MEAT(a), AUSTRALIA
(tonnes)

	<i>Fresh, chilled or frozen</i>								<i>Pork</i>	<i>Bacon and ham(d)</i>	<i>Canned meat(e)</i>
	<i>Beef(b)(c)</i>		<i>Veal(b)</i>		<i>Mutton(b)</i>		<i>Lamb(b)</i>				
	<i>Bone-in</i>	<i>Bone-out</i>	<i>Bone-in</i>	<i>Bone-out</i>	<i>Bone-in</i>	<i>Bone-out</i>	<i>Bone-in</i>	<i>Bone-out</i>			
1993-94	62,662	742,390	1,342	5,818	97,851	70,959	52,719	5,226	5,855	204	10,354
1994-95	59,811	716,750	1,983	6,920	103,259	65,380	48,539	4,595	5,496	160	11,531
1995-96	50,718	702,619	1,696	5,348	80,955	64,215	46,269	7,744	5,656	359	14,230
<i>1995-96 ---</i>											
March	5,643	70,780	154	324	9,632	5,810	4,359	754	431	48	1,624
April	4,174	57,190	89	363	6,408	5,444	3,599	774	328	48	784
May	2,965	56,505	173	377	6,392	4,987	3,961	855	515	24	883
June	1,448	54,504	84	207	5,664	4,459	4,102	639	914	51	876
<i>1996-97 p--</i>											
July	1,698	60,906	171	270	5,146	4,501	3,470	549	693	62	923
August	3,740	51,733	122	374	5,317	3,515	3,070	592	528	3	1,045
September	5,332	46,702	148	423	6,386	3,528	4,267	557	595	39	1,070
October	5,651	56,495	147	410	7,516	4,744	5,402	734	666	29	989
November	7,362	59,198	68	372	9,437	5,190	4,929	882	659	29	1,097
December	6,054	54,030	28	171	9,597	4,431	4,051	726	296	25	812
January	2,868	39,400	51	169	7,757	4,052	3,343	609	223	29	667
February	3,596	57,336	80	337	9,236	4,374	4,364	906	305	35	1,088
March	4,059	62,845	54	257	8,324	4,253	4,656	735	340	16	934
April	2,878	69,039	87	321	8,459	3,672	5,370	825	401	3	987
May	1,827	69,900	123	309	7,863	4,128	5,326	549	938	17	950

(a) Excludes offal. (b) Factors can be applied to beef, veal, mutton and lamb bone-out figures to derive bone-in carcass weight which, when added to bone-in figures, shows total exports in carcass weight. The factor for beef and veal is 1.5 and for mutton and lamb is 2.0 (Source: Australian Meat and Livestock Corporation). (c) Includes buffalo meat. (d) Cured carcass weight of smoked or cooked bacon and ham. Includes stated net weight of packs of canned bacon and ham. (e) Canned weight. Excludes canned bacon and ham.

TABLE 5. EXPORTS OF LIVE SHEEP(a), AUSTRALIA

	Number (<i>'000</i>)	Gross Weight (<i>'000 tonnes</i>)	Gross Value (<i>\$ '000</i>)	Unit Value(b) (<i>\$</i>)
1993-94	5,433.1	287.6	149,027	27.43
1994-95	5,697.0	290.2	184,291	32.35
1995-96	5,879.9	296.9	226,911	38.59
<i>1995-96</i>				
March	543.6	27.6	21,040	38.71
April	423.2	22.1	15,267	36.08
May	644.2	32.7	21,895	33.99
June	318.4	14.7	11,343	35.62
<i>1996-97 p—</i>				
July	274.4	13.7	9,969	36.32
August	387.3	19.1	14,359	37.08
September	559.2	28.5	20,973	37.50
October	578.8	30.3	21,137	36.52
November	468.5	25.8	16,748	35.75
December	474.7	25.6	16,081	33.87
January	546.3	30.0	18,776	34.37
February	489.5	25.4	17,254	35.25
March	471.7	23.2	17,206	36.48
April	336.1	17.6	11,893	35.39
May	360.8	17.8	12,515	34.69

(a) Excludes sheep for breeding. (b) Obtained by dividing the gross value by the number of sheep exported.

TABLE 6. EXPORTS OF LIVE CATTLE(a), AUSTRALIA

	Number (<i>'000</i>)	Gross Weight (<i>'000 tonnes</i>)	Gross Value (<i>\$ '000</i>)	Unit Value(b) (<i>\$</i>)
1993-94	234.7	79.9	115,021	489.97
1994-95	385.7	136.5	201,948	523.52
1995-96	615.9	219.0	343,699	558.07
<i>1995-96—</i>				
March	55.3	20.6	31,558	570.80
April	58.7	21.9	33,808	575.82
May	75.1	27.1	41,709	555.09
June	66.5	23.4	33,282	500.31
<i>1996-97 p—</i>				
July	71.0	25.7	35,967	506.76
August	72.9	24.4	35,024	480.73
September	56.3	19.8	27,252	484.38
October	63.8	22.7	29,884	468.56
November	47.3	16.8	23,192	490.72
December	65.3	22.7	31,170	477.62
January	64.6	24.4	32,843	508.60
February	66.5	24.6	33,759	507.52
March	67.9	26.1	32,870	484.16
April	88.2	32.3	43,909	497.75
May	94.8	34.4	48,941	516.19

(a) Excludes cattle for breeding. (b) Obtained by dividing the gross value by the number of cattle exported.

TABLE 7. CHICKENS SLAUGHTERED (a)
('000)

	NSW	Vic.	Qld	SA	WA	Aust.(b)
1994-95	133,927.4	77,193.1	56,570.1	28,866.2	33,938.6	330,495.3
1995-96	133,756.6	85,410.9	55,333.1	26,948.2	34,931.2	336,380.0
1996-97 p	132,908.6	86,732.6	61,089.2	27,968.2	36,360.2	345,058.7
<i>1995-96 ---</i>						
April	10,660.8	7,047.4	4,505.4	2,395.9	2,922.3	27,531.7
May	10,983.4	7,538.6	4,164.3	2,029.7	2,797.8	27,513.8
June	11,323.1	6,689.1	4,326.5	2,091.2	2,927.4	27,357.4
<i>1996-97 p---</i>						
July	11,323.1	7,397.0	4,875.5	2,344.6	3,222.5	29,162.6
August	10,352.7	7,155.9	4,484.2	2,139.6	2,828.4	26,960.8
September	11,601.2	7,308.5	4,882.2	2,206.1	3,203.6	29,201.6
October	11,729.3	8,282.4	5,312.9	2,396.1	3,192.3	30,912.9
November	10,148.7	6,957.6	4,855.2	2,221.8	2,952.5	27,135.8
December	11,478.0	7,780.8	5,395.2	2,570.2	3,330.8	30,554.9
January	11,254.9	7,661.6	5,423.8	2,506.3	3,253.8	30,100.4
February	10,398.5	6,863.8	4,759.9	2,056.1	2,892.5	26,970.9
March	11,517.4	6,520.7	5,301.6	2,457.2	2,714.6	28,511.5
April	11,475.7	7,244.5	5,373.5	2,444.9	3,019.1	29,557.6
May	10,609.1	6,867.5	4,956.8	2,297.7	2,834.1	27,565.2
June	11,020.0	6,692.3	5,468.4	2,327.7	2,915.9	28,424.3

(a) Comprises broilers, fryers and roasters. (b) Excludes Tasmania, the Northern Territory and the Australian Capital Territory.

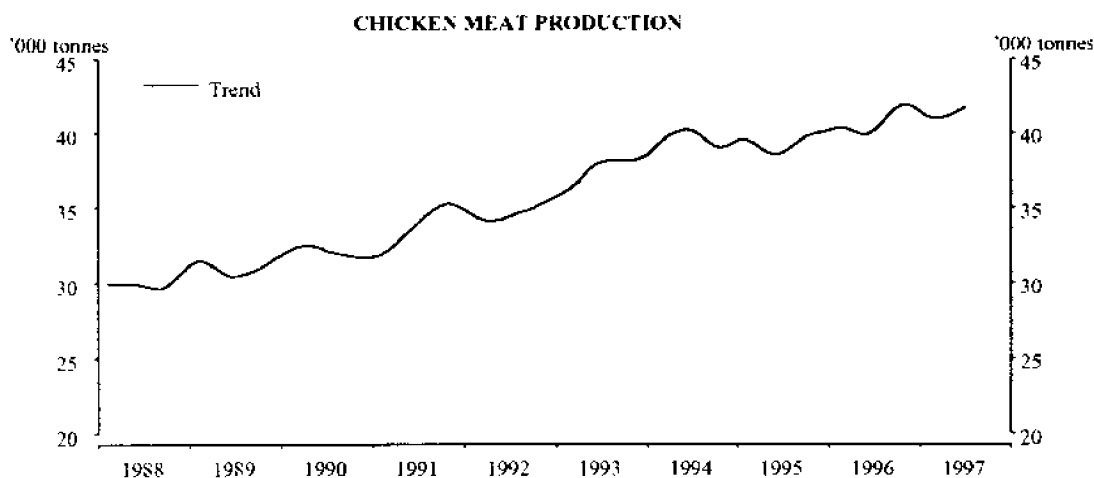
TABLE 8. CHICKEN MEAT PRODUCED (a)
(Tonnes carcass weight)

	NSW	Vic.	Qld	SA	WA	Aust.(b)	Trend estimate(c)
1994-95	199,589	109,515	76,337	39,103	42,007	466,551	..
1995-96	199,152	127,736	71,607	37,691	44,358	480,544	..
1996-97 p	199,719	129,930	80,487	38,889	46,789	495,814	..
<i>1995-96</i>							
April	15,987	10,543	5,783	3,438	3,698	39,448	39,933
May	16,509	10,675	5,427	2,880	3,642	39,132	39,868
June	16,496	10,212	5,677	2,942	3,922	39,249	40,145
<i>1996-97 p---</i>							
July	16,763	10,739	6,304	3,110	4,329	41,245	40,662
August	15,510	11,366	5,786	2,827	3,757	39,246	41,239
September	17,422	11,122	6,318	3,042	4,227	42,130	41,736
October	17,938	12,457	6,881	3,155	4,187	44,617	41,963
November	15,114	10,453	6,291	3,167	3,835	38,860	41,819
December	16,605	11,780	7,041	3,600	4,262	43,288	41,470
January	16,623	11,173	7,077	3,502	4,071	42,446	41,126
February	15,234	11,030	6,314	2,819	3,699	39,097	40,973
March	17,246	9,188	7,077	3,440	3,371	40,323	41,030
April	17,574	10,256	7,141	3,595	3,771	42,336	41,209
May	16,571	10,367	6,751	3,321	3,573	40,583	41,447
June	17,120	9,999	7,506	3,310	3,707	41,643	41,719

(a) Chicken meat is shown in dressed weight of whole birds, pieces and giblets. (b) Excludes Tasmania, the Northern Territory and the Australian Capital Territory.

(c) Trend estimates for the most recent months are subject to revision when data for subsequent months become available.

Note: Some slaughtering and meat production statistics for 'Ducks and Drakes' and 'Other Fowls and Turkeys' are available by contacting the ABS on Canberra 252 5337 or by writing to PO Box 10, Belconnen ACT 2616 (Attention: Agriculture Section).



**RELIABILITY OF JUNE TREND ESTIMATES
FOR CHICKEN MEAT**

Readers should exercise care in the interpretation of trend data as the last six observations, in particular, are likely to be revised with either revisions to the underlying data or the addition of data for the month of July.

The table below shows, for chicken meat production for the six months ended June:

- trend estimates as published;
- trend estimates assuming an increase in seasonally adjusted data for July of 4% on the June figure;
- trend estimates assuming a decrease in seasonally adjusted data for July of 4% on the June figure.

The percentage change of 4% was chosen because the average absolute monthly percentage change in the seasonally adjusted data since the inception of the series has been 3.84%

	<i>Trend as published</i>	<i>What if next month's seasonally adjusted estimate:</i>	
		<i>rises by 4%</i>	<i>falls by 4%</i>
(tonnes, carcass weight)			
<i>1996-97p</i>			
January	41,126	41,085	41,147
February	40,973	40,890	41,000
March	41,030	40,990	41,044
April	41,209	41,313	41,169
May	41,447	41,752	41,274
June	41,719	42,237	41,337
<i>1997-98p</i>			
July	—	42,693	41,334

TABLE 9. WHOLE MILK INTAKE BY FACTORIES (a)
(Source: Australian Dairy Corporation)
(Million Litres)

	<i>NSW</i>	<i>Vic.</i>	<i>Qld</i>	<i>SA</i>	<i>WA</i>	<i>Tas.</i>	<i>Aust.</i>	<i>Seasonally adjusted</i>	<i>Trend estimate(b)</i>
1993-94	1,098	4,967	764	456	344	447	8,077
1994-95	1,087	5,113	741	484	343	436	8,206
1995-96	1,114	5,481	751	513	342	514	8,716
<i>1995-96 —</i>									
March	90	392	60	36	27	46	650	727	751
April	83	307	54	35	26	37	542	767	768
May	86	274	57	37	27	31	512	795	779
June	86	239	60	36	29	17	466	825	781
<i>1996-97 p--</i>									
July	91	259	64	39	30	12	494	765	775
August	97	394	66	44	30	22	653	741	765
September	105	599	67	50	31	49	900	738	755
October	115	758	72	57	32	69	1,104	748	747
November	109	748	69	54	29	74	1,083	756	744
December	109	691	72	51	28	71	1,021	764	744
January	105	568	71	47	27	56	874	736	746
February	91	430	61	39	26	48	695	726	748
March	98	390	67	40	29	48	671	749	752
April	90	295	61	37	28	37	548	768	758
May	91	262	62	39	29	28	511	782	765

(a) Includes the whole milk equivalent of farm cream intake. (b) Trend estimates for the most recent months are subject to revision when data for subsequent months become available.

TABLE 10. MARKET MILK SALES BY FACTORIES (a)
(Source: Australian Dairy Corporation)
(Million Litres)

	<i>NSW</i>	<i>Vic.</i>	<i>Qld</i>	<i>SA</i>	<i>WA</i>	<i>Tas.</i>	<i>Aust.</i>
1993-94	607	454	356	159	181	53	1,811
1994-95	605	452	368	167	188	52	1,832
1995-96	611	456	372	163	187	50	1,840
<i>1995-96 —</i>							
March	53	39	32	14	16	4	157
April	51	38	31	13	14	4	151
May	53	41	32	14	17	4	162
June	51	37	30	13	15	4	150
<i>1996-97 p--</i>							
July	52	39	33	14	17	4	159
August	53	40	33	14	17	4	161
September	51	37	30	14	15	4	151
October	52	39	32	15	17	4	159
November	50	38	31	15	15	4	153
December	50	37	30	15	15	4	151
January	51	37	32	15	16	4	154
February	47	34	29	13	15	4	142
March	52	37	31	14	16	4	155
April	50	37	31	16	16	4	155
May	52	39	33	15	16	4	160

(a) Includes white, flavoured, high and low fat milk, and milk.



**RELIABILITY OF MAY TREND ESTIMATES
FOR WHOLE MILK INTAKE BY FACTORIES**

Readers should exercise care in the interpretation of trend data as the last six observations, in particular, are likely to be revised with either revisions to the underlying data or the addition of data for the month of June.

The table below shows, for whole milk intake by factories for the six months ended May:

- trend estimates as published;
- trend estimates assuming an increase in seasonally adjusted data for June of 2% on the May figure;
- trend estimates assuming a decrease in seasonally adjusted data for June of 2% on the May figure.

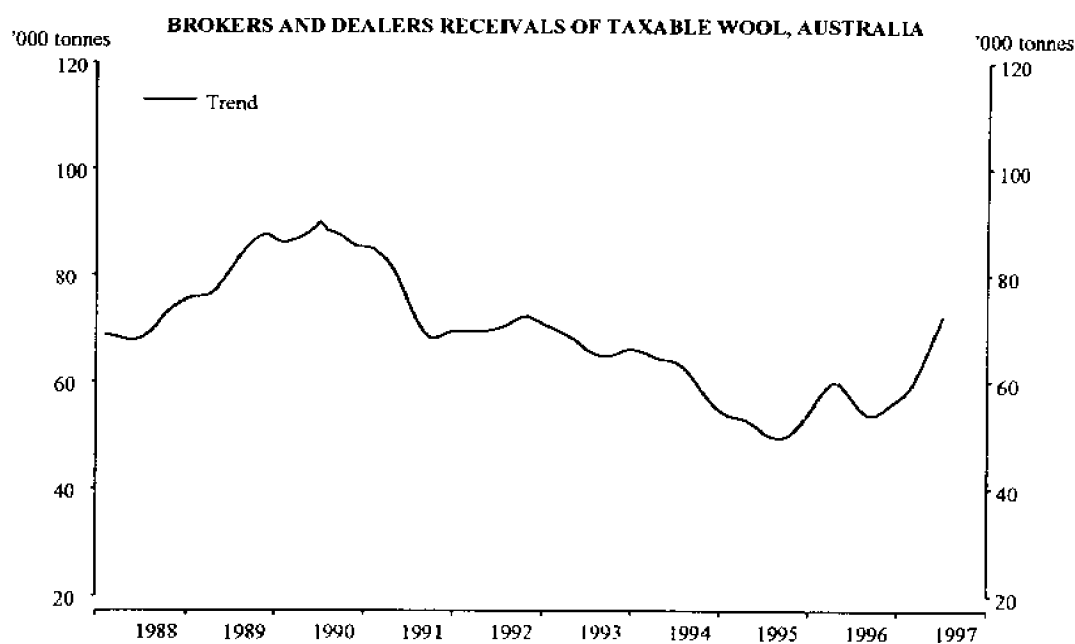
The percentage change of 2% was chosen because the average absolute monthly percentage change in the seasonally adjusted data since the inception of the series has been 2.16%

	<i>Trend as published</i>	<i>What if next month's seasonally adjusted estimate:</i>	
		<i>rises by 2%</i>	<i>falls by 2%</i>
(million litres)			
1996-97p			
December	744	743	744
January	746	744	745
February	748	747	748
March	752	754	752
April	758	763	758
May	765	775	765
June	—	785	771

TABLE 11. BROKERS AND DEALERS RECEIVALS OF TAXABLE WOOL
(Tonnes)

	Australia						Total	% of Total received by brokers	Seasonally adjusted	Trend estimate(a)
	NSW	Vic.	Qld	SA	WA	Tas.				
1994-95	177,649	171,915	51,935	86,977	173,383	17,577	679,435	83.4
1995-96	165,523	161,388	44,639	87,764	165,979	15,997	641,290	85.5
1996-97 p	196,847	175,252	45,955	90,240	161,761	18,876	688,932	82.3
<i>1995-96 —</i>										
April	11,353	9,464	3,511	6,566	12,719	604	44,217	84.5	61,824	59,651
May	11,164	8,683	4,076	4,787	9,334	1,798	39,841	82.7	62,332	58,379
June	10,223	4,856	4,196	2,878	4,426	957	27,537	80.3	56,580	56,540
<i>1996-97 p—</i>										
July	14,065	8,383	4,845	4,775	9,510	1,290	42,868	79.5	52,198	54,738
August	18,953	14,687	4,853	8,317	17,932	1,693	66,436	85.5	49,462	53,779
September	24,843	22,966	4,303	12,574	21,234	1,894	88,314	84.8	55,797	53,911
October	25,111	26,202	2,902	13,334	21,541	2,335	91,425	85.2	54,216	54,674
November	19,639	26,231	2,977	10,558	14,957	2,900	77,261	82.6	58,822	55,801
December	11,998	17,582	1,679	4,907	6,273	1,778	44,218	79.4	55,705	56,821
January	12,931	13,080	2,930	3,846	11,221	1,641	45,649	81.9	62,986	57,976
February	11,877	10,918	1,864	6,091	14,989	838	46,578	80.8	52,962	59,740
March	14,476	9,940	4,795	8,115	15,251	835	53,414	82.2	57,540	62,402
April	14,407	9,400	5,652	8,343	13,833	945	52,580	82.2	72,984	65,655
May	13,553	9,135	4,594	5,217	7,801	1,620	41,919	79.6	65,896	68,998
June	14,992	6,729	4,561	4,163	6,718	1,106	38,269	75.8	77,012	72,255

(a) Trend estimates for the most recent months are subject to revision when data for the subsequent months become available.



**RELIABILITY OF JUNE TREND ESTIMATES
FOR WOOL RECEIVALS**

Readers should exercise care in the interpretation of trend data as the last six observations, in particular, are likely to be revised with either revisions to the underlying data or the addition of data for the month of July.

The table below shows, for wool receivals for the six months ended June:

- trend estimates as published;
- trend estimates assuming an increase in seasonally adjusted data for July of 9% on the June figure;
- trend estimates assuming a decrease in seasonally adjusted data for July of 9% on the June figure.

The percentage change of 9% was chosen because the average absolute monthly percentage change in the seasonally adjusted data since the inception of the series has been 8.86%

	<i>Trend as published</i>	<i>What if next month's seasonally adjusted estimate:</i>	
		rises by 9%	falls by 9%
(tonnes)			
<i>1996-97p</i>			
January	57,976	57,733	57,997
February	59,740	59,330	59,794
March	62,402	62,194	62,425
April	65,655	66,178	65,566
May	68,998	70,712	68,691
June	72,255	75,244	71,435
<i>1997-98p</i>			
July	—	79,144	73,397

EXPLANATORY NOTES

Introduction

This publication contains information (preliminary where indicated) on livestock slaughterings, meat production, stocks of frozen meat, exports of live sheep and live cattle, exports of fresh, frozen and processed meat, and whole milk intake by factories, market milk sales by factories and receivals of taxable wool by wool brokers and dealers.

Livestock slaughterings and meat production

2. The statistics on slaughterings and meat production are based on a monthly collection from abattoirs and other major slaughtering establishments and include estimates of animals slaughtered on farms and by country butchers and other small slaughtering establishments.

3. Care should be taken when using this information as the figures only relate to slaughterings for human consumption and do not include animals condemned or those killed for boiling down.

4. Poultry slaughterings statistics have been compiled from returns supplied by commercial poultry slaughtering establishments. Producers in the Northern Territory and the Australian Capital Territory and the many very small producers are excluded from the collection; however, the statistics represent a high level of coverage.

Live sheep and cattle exports

5. These tables contain statistics of the number of live sheep and cattle exported, the gross weight, gross value and unit value. Sheep or cattle exported for breeding are excluded.

Milk

6. Tables 9 and 10 contain statistics collected by the Australian Dairy Corporation (ADC) on whole milk intake and market milk sales by factories.

Wool receivals

7. The statistics in Table 11 show the amount of taxable wool received by brokers and dealers from wool producers. It excludes wool received by brokers on which tax has already been paid by other dealers (private buyers) or brokers.

8. The information shown is on the basis of the State in which wool has actually been received and does not necessarily reflect the production of wool in that State.

Seasonal adjustment

9. Details of seasonally adjusted figures for livestock slaughterings, red meat, milk and wool are shown in Tables 1, 2, 9 and 11 respectively. Information on the methods used in seasonally adjusting these series is available on request.

Trend Estimates and Sensitivity Analysis

10. A trend estimate is obtained by reducing the irregular component from the seasonally adjusted series. In this publication trend estimates are generally derived by applying a 13 term Henderson moving average to the seasonally adjusted series.

The 13 term Henderson, (like all Henderson averages) is symmetric, but as the end of a time series is approached, asymmetric forms of the average are applied. While the asymmetric weights enable the trend to be calculated for the latest month, it does result in revisions to the last six estimates as additional observations become available.

11. Sensitivity analysis indicates the potential magnitude and direction of revisions created to the last six estimates. It aims to show how a specified movement in the seasonally adjusted data in the next period will affect the trend path of the time series. By showing how sensitive the trend estimates are to the addition of new data, the analysis provides information which can be used in the assessment of the trend's stability. For further information, see *A Guide to Interpreting Time Series - Monitoring "Trends", an Overview* (1348.0) or contact the Assistant Director, Time Series Analysis on (06) 252_6345.

Related publications

12. Users may also wish to refer to the following priced publications which are available on request:

Agriculture, Australia (7113.0)

Apparent Consumption of Selected Foodstuffs, Australia 1995-96, Preliminary (4315.0)

13. Current publications produced by the ABS are listed in the Catalogue of *Publications and Products, Australia* (1101.0). The ABS also issues, on Tuesdays and Fridays, a *Release Advice* (1105.0) which lists publications to be released in the next few days. The Catalogue and Release Advice are available from any ABS office.

Next release date

14. The expected release date for the July 1997 issue of this publication is 4 September 1997. The date can be confirmed a few days prior to release by telephoning (06) 252 5226.

Symbols and other usages

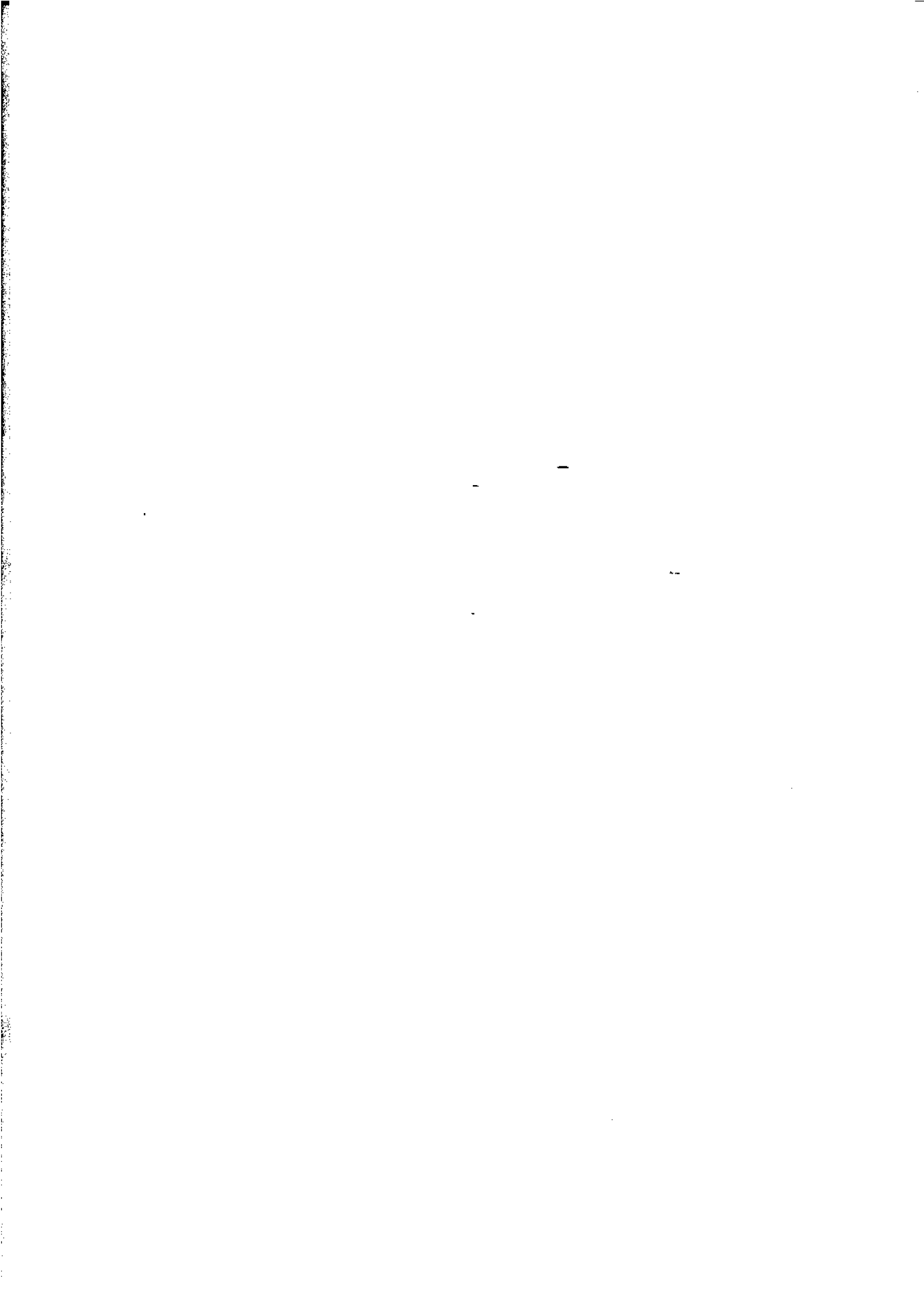
P preliminary
 .. not applicable
 — nil or rounded to zero

15. The figures shown in this publication have been revised where necessary and as a consequence may not agree with similar data shown in previous publications. Statistics are revised, for example, when abattoirs advise ABS of errors or omissions in data supplied or estimated previously.

16. Where figures have been rounded, discrepancies may occur between sums of the component items and totals.

17. Unless indicated otherwise, Australian totals include data for all States and both Territories.

W. McLennan
Australian Statistician



For more information . . .

The ABS publishes a wide range of statistics and other information on Australia's economic and social conditions. Details of what is available in various publications and other products can be found in the ABS Catalogue of Publications and Products available from all ABS Offices.

ABS Products and Services

Many standard products are available from ABS bookshops located in each State and Territory. In addition to these products, information tailored to the needs of clients can be obtained on a wide range of media by contacting your nearest ABS Office. The ABS also provides a Subscription Service for standard products and some tailored information services.

National Dial-a-Statistic Line

0055 86 400

Steadycom P/L: premium rate 25c/20 secs.

This number gives 24-hour access, 365 days a year, for a range of important economic statistics including the CPI.

Internet

<http://www.abs.gov.au>

A wide range of ABS information is available via the Internet, with basic statistics available for each State, Territory and Australia. We also have Key National Indicators, ABS product release details and other information of general interest.

Sales and Inquiries

client.services@abs.gov.au

National Mail Order Service (06) 252 5249
as from 18 August 1997 (02) 6252 5249
Subscription Service 1800 02 0608

	Information Inquiries	Bookshop Sales
CANBERRA	(06) 252 6627	(06) 207 0326
as from 18 August 1997	(02) 6252 6627	(02) 6207 0326
SYDNEY	(02) 9268 4611	(02) 9268 4620
MELBOURNE	(03) 9615 7755	(03) 9615 7755
BRISBANE	(07) 3222 6351	(07) 3222 6350
PERTH	(08) 9360 5140	(08) 9360 5307
ADELAIDE	(08) 8237 7100	(08) 8237 7582
HOBART	(03) 6222 5800	(03) 6222 5800
DARWIN	(08) 8943 2111	(08) 8943 2111



Client Services, ABS, PO Box 10, Belconnen ACT 2616

Produced by the Australian Bureau of Statistics
© Commonwealth of Australia 1997



2721500006979

ISSN 0728-4047

Recommended retail price: \$16.00